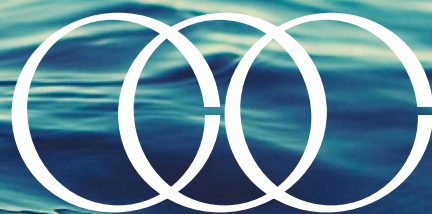




GUIDE TO MOBILE

A great place to live, play or grow a business



MOBILE AREA
CHAMBER OF COMMERCE



Every day thousands of men and women come together to bring you the wonder that is electricity, affordably and reliably, and with a belief that, in the right hands, this energy can do a whole lot more than make the lights come on. It can make an entire state shine.

© 2016 Alabama Power Company

  AlabamaPower.com

 **Alabama Power**



2017 GUIDE TO MOBILE

Mobile is a great place to live, play, raise a family and grow a business. Founded in 1702, this port city is one of America's oldest. Known for its Southern hospitality, rich traditions and an enthusiastic spirit of fun and celebration, Mobile offers an unmatched quality of life. Our streets are lined with massive live oaks, colorful azaleas and historic neighborhoods. A vibrant downtown and quality healthcare and education are just some of the things that make our picturesque city great. Located at the mouth of the Mobile River at Mobile Bay, leading to the Gulf of Mexico, Mobile is only 30 minutes from the sandy white beaches of Dauphin Island, yet the mountains of northern Alabama are only a few hours away. Our diverse city offers an endless array of fun and enriching activities – from the Alabama Deep Sea Fishing Rodeo to freshwater fishing, baseball to football, museums to the modern IMAX Dome Theater, tee time on the course to tea time at a historic plantation home, world-renowned Bellingrath Gardens to the Battleship USS ALABAMA, Dauphin Island Sailboat Regatta to greyhound racing, Mardi Gras to the Christmas parade of boats along Dog River. Discover what makes Mobile great!

Contents

Interesting Mobile Facts	4	Performing Arts	19
Mobile by the Numbers	5	Libraries	20
Business	6-8	Parks and Outdoors	21
Mobile's Largest Employers	9	Sports	22
Transportation	10-11	Entertainment	23
Real Estate	12	Food	24
Healthcare	13-14	Festivals and Events	25-26
Education	15-16	What You Need to Know to Set Up a Home or Business in Mobile	27-30
Museums and Attractions	17-18		



COOL STUFF TO KNOW ABOUT MOBILE

It's Mo-beel!

The city's name is pronounced "mo-beel," (with a soft emphasis on the second syllable). The name was given by the French and comes from the Maubila Indians.



Mobile-Tensaw River Delta

The [Mobile-Tensaw River Delta](#), the second-largest river delta in the U.S., covers more than 260,000 acres of water, swamps, river bottoms and marshes perfect for exploring, fishing, hunting, boating, canoeing and birding. Designated by the U.S. Congress as a National Natural Landmark, the area is rich in diverse wildlife.



6 FLAGS



Visit Mobile photos

Climate for Sports

From baseball to golf to fishing, Mobile has almost every sporting option and a mild climate for yearlong enjoyment. Regional golf is among the nation's finest, with more than 25 courses.

International Roots

Founded in 1702, Mobile is one of the oldest U.S. cities. Six different flags have flown over the city: French, Spanish, British, Republic of Alabama, Confederacy and United States of America.

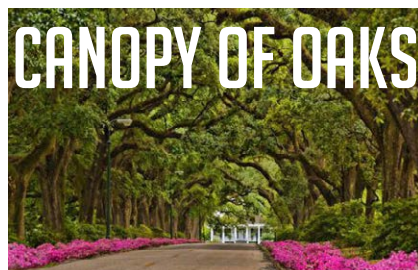


AZALEA CITY

Mobile is known as the Azalea City thanks to Frise Langlois, who first brought the bright pink blossoms here from his father's garden in Toulouse, France in 1754.

Learn More

Mobile has four major universities – one public, [University of South Alabama](#); one private Jesuit, [Spring Hill College](#); one private Southern Baptist institution, [University of Mobile](#); and [Faulkner University](#). [Mobile County Public Schools](#) is the largest public school system in the state and one of the most populous in the country.



CANOPY OF OAKS

Mobile is known for its miles of streets canopied by majestic live oaks. The city's oldest living resident, the Duffee Oak, is a massive 300-year-old oak tree and is one of 3,000 live oaks in Mobile more than 100 years old.

3 CENTURIES OF FUN!

Talk about a city born to celebrate! Mobile is the birthplace of Mardi Gras in the U.S. The first masked carnival society paraded through downtown streets in 1830. Now more than 50 parading and non-parading societies maintain the city's Mardi Gras traditions, including three weeks of parades, balls and pageantry.



MOBILE BY THE NUMBERS

Mobile Bay Region

Mobile and Baldwin counties
Total Land Area: 2,828 square miles

The Mobile Bay region is located in southwest Alabama at the head of Mobile Bay. The region includes Mobile and Baldwin counties and covers an area of 2,828 square miles, with the city of Mobile as the dominant urban area.



Climate

Mobile's mild, semi-tropical climate makes outdoor activities enjoyable year-round. Thanks to the Gulf of Mexico air, summers are consistently warm and the winters are mild. The Mobile area averages approximately 219 days of sunshine every year. That makes it sunny 60 percent of the year.

Clear Days	103
Partly Cloudy Days.....	116
Annual Average Temperature.....	67.5
Coldest Month – January Average.....	50
Warmest Month – July Average	82.2
Annual Average Rainfall (inches).....	64
Annual Average Snow	0
Prevailing Wind Direction	North

MOBILE AREA POPULATION

	Population	Median Age
City of Mobile	194,288	36
Mobile County	415,395	37
Baldwin County	203,709	42
Mobile Bay Area	619,104	37

Source: U.S. Census Bureau

With a 2015 estimated Census population of 619,104, the Mobile Bay region is Alabama's second-largest metro area. Mobile County, the second-largest county in the state, has 415,395 residents. Baldwin County's population is 203,709 and has increased more than 12 percent since 2010, making it the fastest-growing county in Alabama. The population for the city of Mobile is 194,288.

37 ALREADY HOME TO MORE THAN
37 AEROSPACE COMPANIES.



Airbus photo

HOME TO AIRBUS U.S. MANUFACTURING FACILITY — THE COMPANY'S FIRST PRODUCTION SITE IN AMERICA. THE \$600 MILLION, 53-ACRE ASSEMBLY PLANT IS LOCATED AT MOBILE AEROPLEX AT BROOKLEY.

MEDIAN HOUSEHOLD INCOME

City of Mobile
Mobile County
Mobile Bay Area



Source: U.S. Census Bureau



200

MORE THAN 200
BUSINESSES SERVING
THE OIL AND GAS
INDUSTRY.



The first plane delivered by Mobile's Airbus assembly plant flies over downtown Mobile in 2016.

Airbus photo

BUSINESS

The Mobile Area Chamber of Commerce is the lead economic developer for the City of Mobile, Mobile County and Washington County. Our economic success is attributed to the collaborative efforts of Team Mobile – a group including the City of Mobile, Mobile County, Alabama State Port Authority, Mobile Airport Authority, local utility and educational entities, and the Chamber. According to an economic impact study by Auburn University at Montgomery, Mobile has the most diverse economy in Alabama. Over the last decade, Mobile's economic development efforts garnered \$8.47 billion in capital investment and 15,771 jobs at new and existing area companies.

The following companies are among the most recent to announce new or additional investment here:

Airbus
Aircraft Final Assembly
www.airbus.com

The assembly plant makes Mobile the fourth city in the world and the only city in the U.S. to assemble the A320 aircraft family. The facility is drawing continued aerospace investment from Airbus suppliers and service vendors, including Safran Engineering Services, Hutchinson, MAAS Aviation and UTC Aerospace.

Alabama Steel Terminals
Steel Warehousing
www.alabamasteelterminals.com
This steel coil handling facility is located at the Port of Mobile.

AM/NS Calvert
Steel Manufacturing
www.usa.arcelormittal.com
The joint venture of ArcelorMittal and Nippon Steel and Sumitomo Metal Corp. is increasing its slab yard storage area and investing in technologies for high-strength steel.

NEW JOBS
CREATED
15,771

\$8.47 BILLION
IN CAPITAL INVESTMENTS AT
NEW & EXISTING COMPANIES



Austal USA launches a Joint High Speed Vessel (JHSV), one of two major U.S. military contracts at the shipyard.

Austal USA photo

APM Terminals Mobile

Container Terminal

www.apmterminals.com

This investment will expand the container yard by 20 acres and include two additional cranes.

Arkema

Chemicals

www.arkema-america.com

The company is adding a production line to make Kepstan™ PEKK, used in 3D printing and carbon fiber applications, at its Axis facility.

Austal USA

Shipbuilding

www.austal.com

The latest investment included a new office complex and expansion of the Module Manufacturing Facility and Assembly Bay 6. The company has more than 4,000 employees.

Blastech Mobile Steel

Fabrication

www.blastechmobile.com

The company is building a new 21,000-square-foot facility and more than doubling its workforce.

BASF

Chemicals

www.basf.us

BASF launched a new product line to make biodegradable cleaning agents more effective. The company located this project at Evonik.

Bayer Crop Science

Chemicals

www.cropscience.bayer.com

The project is co-locating at Evonik. Bayer will use an Evonik chemical in production of an agricultural herbicide.

**AVERAGE SALARY
OF JOBS CREATED
\$45,824**

These are the results of the Mobile Area Chamber's economic development efforts over the past decade.

**35 NEW
BUSINESSES
RECRUITED**

**EXPANSIONS AT
75 EXISTING
COMPANIES**



AM/NS Calvert is part of a growing steel industry in the Mobile area.

AM/NS Calvert photo

Danby

Distribution Warehouse & Retail

www.danby.com

Moving into an existing warehouse in Saraland, the company will use the Port of Mobile to receive incoming merchandise to meet the needs of its customers in nine states.

Evonik

Chemicals

www.evonik.com

The company is expanding production and launching a new product. Evonik is also developing a chemical park.

Marine Well Containment Co

Oil Spill Recovery

www.marinewellcontainment.com

An expanded containment system used to cap and contain oil is housed in Mobile.

Myer Marine Services

Maritime Manufacturing & Maintenance

www.myermarineservices.com

To manufacture and service dredging equipment, the company built a new 32,000-square-foot facility.

Prism Systems

Software Development

www.prismsystems.com

Driving this Mobile-based company's expansion is a new research and development lab.

Rural Sourcing Inc. (RSI)

Software Development

www.ruralsourcing.com

The Atlanta-based firm opened a software development center in downtown Mobile.

SSAB Americas

Steel Manufacturing

www.ssab.com

The company added a heat-treating facility to harden steel, a niche market for SSAB.

Star Aviation

Aerospace

www.staraviation.com

Expanding its manufacturing division, the company is constructing a new 24,000-square-foot facility.

Tate & Lyle

Splenda Sucralose

www.tateandlyle.com

The company announced it would move its entire production of Splenda Sucralose to its Washington County facility.

Worthington Industries

Cryogenic Technology

www.worthingtonindustries.com

Following the company's purchase of Taylor Wharton's cryoscience business, Worthington decided to leave operations in the Mobile area, retaining 61 local positions.

MOBILE AREA MAJOR EMPLOYERS

Employers by Employee Count

Product or Service

4,000-plus employees

Austal
Infirmary Health System
Ingalls Shipbuilding
Mobile County Public Schools
University of South Alabama & Health System

Shipbuilding
Healthcare
Shipbuilding
K-12 Public Education
Education/Healthcare

2,999 – 1,000 employees

Alorica
AltaPointe
AM/NS Calvert
Baldwin County Board of Education
City of Mobile
Mobile County
CPSI
Providence Hospital
Springhill Medical Center
VT MAE

Inbound Call Center
Healthcare
Steel
Education
Local Government
Local Government
Software
Healthcare
Healthcare
Aerospace Maintenance & Repair

999 – 500 employees

Airbus
Alabama Power
Alabama State Port Authority
AT&T
BAE Systems Southeast Shipyards
BASF
Boise Paper
Evonik Industries
G.A. West & Co.
Grand Hotel Marriott Resort
Kimberly-Clark Corp.
Outokumpu Stainless USA
Regions Bank
SSAB Americas

Aerospace
Utility
Maritime/Transportation
Utility
Shipbuilding & Repair
Chemicals
Paper
Chemicals
Industrial Construction
Tourism
Paper
Steel
Financial
Steel

499 – 250 employees

Alabama Orthopaedic Clinic
Canfor Southern Pine
Cardiology Associates
Coca-Cola Bottling Co.
Continental Motors
Fresenius Medical Care
Hargrove Engineers + Constructors
Masland Carpets
Mobile Area Water & Sewer System
Olin Corp.
Phelps Dunbar
Premier Medical
Spring Hill College
The Hiller Cos.
The SSI Group
Thompson Engineering
UOP Honeywell
World Omni Financial Corp.

Healthcare
Lumber
Healthcare
Food Services
Aerospace Engines
Healthcare
Engineering
Carpet
Utility
Chemicals
Legal
Healthcare
Education
Fire Systems & Safety
Software
Engineering
Chemicals
Inbound/Outbound Call Center

MOBILE'S INDUSTRY CLUSTERS



Aviation/Aerospace



Chemical



Healthcare



Information
Technology



Maritime



Logistics/Distribution



Oil & Gas



Steel

TRANSPORTATION



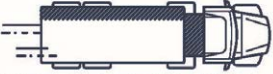
EASY ACCESS TO NORTH AMERICA AND WORLD MARKETS

By land, by air or by sea – you can get here from anywhere.

Mobile is the largest Gulf Coast city between New Orleans and Tampa. A few interesting notes about our water economy: the Mobile-Tensaw River Delta is the second largest in the U.S., Mobile Bay is the fourth largest estuary in the nation and Mobile Bay holds the second largest natural gas reserve in the world.

 **2** AIRPORTS IN MOBILE, BOTH WITH FAA PART 139 CERTIFICATION

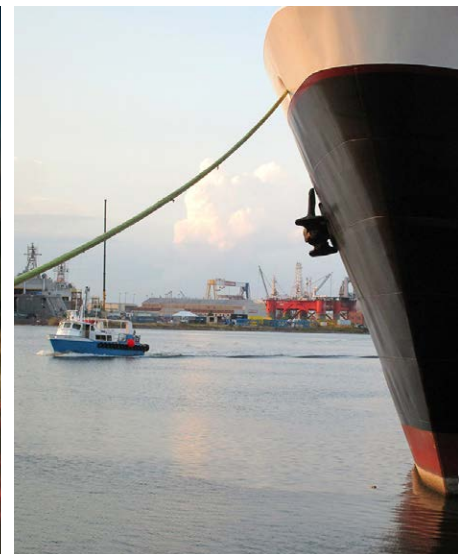
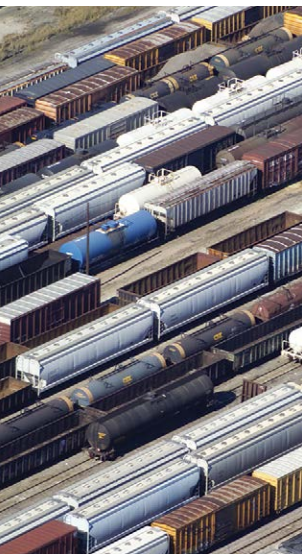
 **9TH** LARGEST PORT BY VOLUME IN THE U.S.

 **2** INTERSTATE SYSTEMS: I-10 AND I-65

 ACCESS TO **15,000** MILES OF INLAND WATERWAYS

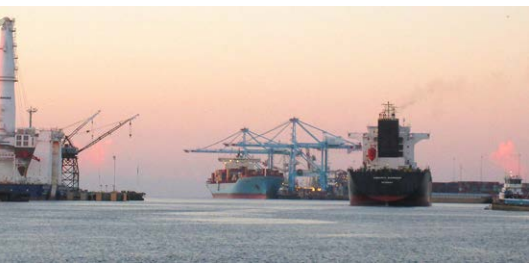
 OVER 2.4 MILLION SQ FT OF WAREHOUSES AND OPEN STORAGE

 **5** CLASS 1 RAILROADS



TRANSPORTATION

When it comes to infrastructure and extensive transportation options, Mobile leads the way. The city's strategic location on the central Gulf Coast and abundant transportation options keep commerce moving and growing. Major rail, ship and highway transportation systems converge along the Mobile River at the Port of Mobile to link Mobile businesses with the nation and the world. In addition to a deepwater port, Mobile has two major interstate connectors, five Class I railroad service providers and two airports.



Port of Mobile

Over the past decade, the [Alabama State Port Authority](#) has invested more than \$700 million on facilities at the Port of Mobile, including a container terminal, a steel terminal, expansion at McDuffie Coal Terminal, a rail ferry terminal, new warehouses and a turning basin. The 45-foot ship channel with its 1,000-foot turning basin is only three hours from deepwater. [APM Terminals-Mobile](#), a state-of-the-art marine terminal, is Post-Panamax capable and offers global access to shippers. Weekly container carrier services shipping to destinations worldwide include China Shipping Container Lines (CSCL), CMA CGM, Cosco Shipping, Maersk, Mediterranean Shipping Co. (MSC) and Zim Integrated Shipping Services. An intermodal container transfer facility provides an intermodal rail option to shippers in North Alabama, Tennessee and surrounding states. McDuffie Coal Terminal is the largest import coal terminal in the nation.

Alabama Cruise Terminal

The [Alabama Cruise Terminal](#) features a 66,000-square-foot terminal, state-of-the-art security and an attached 500-space parking deck with easy access to interstates 10 and 65. The terminal is the home port for the Carnival *Fantasy*.

Railroads

Mobile is served by five national Class I railroads: CSX, Canadian National, Alabama Gulf Coast Railroad – BNSF, Norfolk Southern and Kansas City Southern with piggyback and containerized freight service.

Highway System

Mobile's highway system includes two major interstates and five federal highways. **Interstate 10**, the southernmost coast-to-coast interstate highway in the U.S. connects Jacksonville to Los Angeles. **Interstate 65**, a major north-south route, links the Great Lakes to the Gulf Coast. The area's federal highways are **U.S. 31, 43, 45, 90 and 98**.

As a major manufacturing center and port city, Mobile offers competitive trucking for shippers. Most major regional and national trucking lines serve Mobile and operate terminals in the area.

Airlines

The [Mobile Airport Authority](#) owns and operates Mobile's two airports, **Mobile Regional Airport (MOB)** and the **Mobile Downtown Airport (BFM)** at Mobile Aeroplex at Brookley. Mobile Regional Airport is served by **Delta Air Lines, United Airlines** and **American Airlines**. Daily flights go to five of the nation's largest hubs: Atlanta, Charlotte, Chicago, Dallas/Fort Worth and Houston.

Air Cargo

From the **Mobile Downtown Airport**, near the port and downtown, Mobile has FedEx air cargo service.

Mobile Aeroplex at Brookley

A former U.S. Air Force base located on Mobile Bay near downtown Mobile, **Mobile Aeroplex at Brookley** has been transformed into a leading 1,700-acre industrial and trade complex. Built around a fully operational airfield with a 9,600-foot runway, the complex offers transportation infrastructure second to none. Along with a fully-operational airport able to accommodate the largest aircraft, Brookley provides superb road and rail access.

Public Transportation

Mobile is served by The Wave Transit System, offering bus service throughout the city. The Wave also operates Moda!, a free bus route in downtown Mobile. Baldwin Rural Area Transportation System (BRATS) operates BayLinc, a daily commuter bus connecting Baldwin and Mobile counties.

Transportation online

To learn more about transportation options in the Mobile area, visit these websites:

Alabama State Port Authority

www.asdd.com

City of Mobile

www.cityofmobile.org

Mobile County

www.mobilecountyal.gov

Mobile Regional Airport

www.mobairport.com

The Wave Transit System

www.thewavetransit.com



REAL ESTATE



Mobile is a great place to live, and it's also a great place to buy a house.

In the third quarter of 2016, the median cost of a home purchased in Mobile County was \$135,400, well below the national median of \$240,900.

Overall, Mobile also has a much lower cost of living than most cities its size, and is among the 20 lowest out of 80 mid-size U.S. metropolitan areas according to the Council for Community and Economic Research survey.

When it comes to housing options, Mobile has it all in a range of affordable prices – downtown living, rural solitude,

historic neighborhoods, modern subdivisions, waterfront homes and suburban apartment complexes.

There is a selection of existing houses in Mobile's downtown and midtown neighborhoods, in seven historic residential districts, ranging from mansions to Victorian cottages. Farther away from the central business district, suburban neighborhoods offer the options of rolling hills or quiet cul de sacs.

New houses also are available both in town and in the suburbs. New subdivisions, with a variety of house plans, are under development throughout the area,

and new housing options downtown can put you a short walk from the central business district.

For a list of Mobile Area Chamber-member realtors, visit www.mobilechamber.com. You may also want to visit these Real Estate Associations:

Mobile Area Association of Realtors:

www.mobilerealtor.com

Baldwin County Association of Realtors:

www.southalabama-coastalareamls.com

MOBILE'S
COST OF LIVING
IS CONSISTENTLY ONE OF THE
LOWEST
OF THE 80 MID-SIZE U.S. METROPOLITAN AREAS.



Thigpen Photography

HEALTHCARE

5 MAJOR HOSPITALS WITH MORE THAN 1,900 BEDS



Clockwise from above: USA Children's and Women's Hospital, Mobile Infirmary Medical Center, USA Medical Center, Providence Hospital and Springhill Medical Center.

Mobile is a regional center for medical care, research and education. Nearly 13 percent of Mobile's workforce is employed in the healthcare sector.

Area hospitals include general facilities, a children's and women's hospital, a private mental health hospital and a rehabilitation hospital. Mobile is also home to a cancer research center affiliated with the University of South Alabama.

Military hospitals are located within 60 miles of Mobile at Pensacola Naval Air Station in Pensacola, Fla., and Keesler Air Force Base in Biloxi, Miss.

In addition there are many outpatient surgical centers, emergency clinics, military personnel clinics, home healthcare services, assisted living facilities and nursing homes.

Healthcare companies are more than just healthy here. They're thriving, thanks to strides Mobile is making in medical care, research and education.

Mobile Area Chamber-member healthcare facilities include:

Mobile Infirmary Medical Center
5 Mobile Infirmary Circle, Mobile
(251) 435-2071
www.infirmiryhealth.org

Mobile Infirmary has 677 beds, a trauma center and more than 650 physicians. The Infirmary is the largest non-governmental,

not-for-profit hospital in Alabama and offers a complete range of medical services, including surgery and rehabilitation. Infirmary Health System also includes JL Bedsole/Rotary Rehabilitation Hospital, North Baldwin Infirmary and Thomas Hospital.

JL Bedsole/Rotary Rehabilitation Hospital
5 Mobile Infirmary Dr., Mobile
(251) 431-2016
www.infirmiryhealth.org

Rotary Rehabilitation Hospital has 42 beds and offers continuing treatment for various conditions, including head injuries, strokes, chronic pain and cerebral palsy.

North Baldwin Infirmary
1815 Hand Ave., Bay Minette
(251) 937-5521
www.nbinfirmiry.com

North Baldwin Infirmary provides residents of North Baldwin County with surgical, outpatient diagnostic, emergency, radiology and laboratory services. The 70-bed hospital also offers a state-of-the-art birth center.

Thomas Hospital
750 Morphy Ave., Fairhope
(251) 928-2375
www.thomashospital.com

Thomas Hospital, an Infirmary Health System hospital, has 162 beds. It has a full outpatient diagnostic and surgical center to

accommodate the expanding population in Baldwin County.

Providence Hospital
6801 Airport Blvd., Mobile
(251) 633-1000
www.providencehospital.org

Serving the Mobile area since 1854, Providence Hospital has 349 beds and is a full-service medical and surgical facility. It includes a rehabilitation and wellness center and an outpatient center. The Cancer Center at Providence Hospital is affiliated with the M.D. Anderson Physicians Network. Providence is one of only seven healthcare systems in the nation – the only one in Alabama – to provide services under the M.D. Anderson program.

Springhill Medical Center
3719 Dauphin St., Mobile
(251) 344-9630
www.springhillmedicalcenter.com

Springhill Medical Center has 252 beds and offers emergency medicine, a diagnostic center, a women's center and family-centered labor and delivery. It is the only private hospital in Mobile. The campus is also home to primary care physicians, a senior residence, sleep center, cancer center, athletic club, orthopedic surgery center, wound care and hyperbaric center and an emergency department.

HEALTHCARE

University of South Alabama

The College of Medicine at the University of South Alabama (USA) serves the central Gulf Coast and the southern half of the state, and is the region's largest healthcare system. The college's research department keeps Mobile's healthcare on the cutting edge of medical science. The university supports a medical system that includes USA Medical Center, USA Children's and Women's Hospital and USA Mitchell Cancer Institute.

USA Medical Center

2451 Fillingim St., Mobile
(251) 471-7000

www.usahealthsystem.com/usamc

The University of South Alabama Medical Center has 406 beds and is the region's only Level 1 trauma center and burn unit with emergency departments. The hospital has centers of excellence in stroke care and cardiovascular diseases and a wide range of acute care services.

USA Children's and Women's Hospital

1700 Center St., Mobile
(251) 415-1000

www.usahealthsystem.com/usacwh

USA Children's and Women's Hospital has 219 beds and is dedicated exclusively to the care of women and children. The hospital provides general services and specialized programs such as a regional neonatal intensive care nursery.

USA Mitchell Cancer Institute

1660 Springhill Ave., Mobile
(251) 460-6993

www.usamci.com

The USA Mitchell Cancer Institute is the first academic cancer research institute in the upper Gulf Coast region. MCI provides advanced, comprehensive cancer care with a highly skilled team of professionals working together to address the physical, emotional and spiritual needs of patients and their families.

13% OF LOCAL WORKFORCE
**IS EMPLOYED
IN HEALTHCARE**



USA Health Systems photo

USA Mitchell Cancer Institute, an academic cancer research and treatment facility, is at the forefront in the fight to find new ways to cure and prevent cancer.

Mercy LIFE

2900 Springhill Ave., Mobile
251-287-8420

www.mercylifeal.com

The Mercy LIFE of Alabama Health Center offers clinical and rehabilitative services as well as a PACE program for at-home care of the elderly.

AltaPointe Health Systems

5750-A Southland Dr., Mobile
(251) 473-4423

www.altapointe.org

AltaPointe Health Systems oversees a comprehensive regional system of mental health, mental retardation and substance abuse prevention programs in Mobile, Baldwin and Washington counties.

Emergency Ambulatory Response

Mobile County has six medical transport agencies, including two aero-medical services (Baptist Hospital Life Flight and Gulf Coast).

Mobile Area Chamber-member companies include:

Ferriss Industries Inc.

d/b/a First Response Services
12400 U.S. Hwy. 43 N., Axis
(251) 421-8214

Lifeguard Transportation Service of Mobile

22 Midtown Park W., Mobile
(251) 338-8556 (office)
(251) 338-3338 (dispatch)

www.lifeguardambulance.com

Mobile County EMS

7921C Tanner Williams Rd., Mobile
(251) 343-7131

www.mobilecountyems.org

EDUCATION

A Strong Workforce for a Growing Mobile

Mobile's growing business community counts on a strong, talented and dedicated workforce. Abundant education programs ensure local residents have the skills area employers need. Among the most recognized state-led workforce training programs in the country, [AIDT](#) offers comprehensive pre-employment selection and on-the-job training specific to a qualifying company's needs. In Mobile, AIDT operates the Alabama Aviation Training Center, AIDT Maritime Training Center and the Erich Heine Learning Center.

Mobile is home to several colleges and universities. The largest is the [University of South Alabama](#), with more than 16,000 students. [Faulkner University](#), [Spring Hill College](#) and [University of Mobile](#) are privately run. There are also numerous community colleges, training centers and apprenticeship programs, including [Bishop State Community College](#) and [Coastal Alabama Community College](#). In the spring of 2016, a new 25,000-square-foot advanced manufacturing training facility was announced to help the [Alabama Community College System](#) meet employer needs for skilled workers. In addition to having the state's largest Advanced Placement program, [Mobile County Public Schools](#) has 12 Signature Academies with career-oriented curriculums based on current and projected job openings. Included areas of focus are advanced information technology, aerospace, coastal studies, engineering, entrepreneurship, health, international studies, manufacturing and maritime.



AIDT operates three centers in Mobile: Alabama Aviation Training Center, AIDT Maritime Training Center and the Erich Heine Learning Center.



AIDT photos

Public Schools

Mobile County Public Schools

1 Magnum Pass, Mobile
(251) 221-4000
www.mcpcss.com

Mobile County Public Schools has nearly 60,000 children, making it Alabama's largest public school system. The system has two International Baccalaureate high schools, a magnet program serving students in K-8 and 13 National Blue Ribbon Schools, the highest award given by the U.S. Department of Education.

The Regional School for the Deaf and Blind and Augusta Evans Special School offer services to special-needs students.

There are three additional public school systems in Mobile County – Chickasaw, Saraland and Satsuma.

New students enrolling in a public school should bring their parent or legal

guardian, a photo ID, two proofs of residence and the student's social security card, birth certificate, certificate of immunization and report cards. Immunizations are required for Diphtheria, Tetanus, Polio, Rubella, Measles and Mumps.

Entrance age requirements: Any child who will be five or six years old on or before Sept. 1 is eligible for kindergarten or first grade, respectively.

Alabama School of Mathematics and Science
1255 Dauphin St., Mobile
(251) 441-2100
www.asms.net

The Alabama School of Mathematics and Science attracts some of the brightest high school sophomores, juniors and seniors from all parts of the state and offers outreach programs for local students and schools.

Private Schools

The area has a large parochial school system operated by the Catholic Archdiocese of Mobile, including McGill-Toolen Catholic High School, St. Mary's Catholic School and Little Flower Catholic School. Many other schools are operated through churches or private boards. In all, there are more than 40 private and denominational schools in Mobile.

Mobile Area Chamber-member private and parochial schools include:

Catholic School System
Board of Catholic Education
352 Government St., Mobile
(251) 438-4611

www.mobilearchdiocese.org

There are eight elementary schools and one high school in Mobile County.

Little Flower Catholic School
Pre-K (3&4), K – 8
2103 Government St., Mobile
(251) 479-5761
www.littleflower.cc

EDUCATION

McGill–Toolen Catholic High School

Grades 9 – 12
1501 Old Shell Road, Mobile
(251) 445-2900
www.mcgill-toolen.org

St. Luke's Episcopal School

Pre-K – 12
3975 Japonica Lane, Mobile
(251) 666-2991
www.stlukemobile.com

St. Mary's Catholic School

Grades K – 8
107 N. Lafayette St., Mobile
(251) 433-9904
www.stmarymobile.org

St. Paul's Episcopal School

Grades Pre-K – 12
161 Dogwood Lane, Mobile
(251) 342-6700
www.stpaulsmobile.net

UMS–Wright Preparatory School

Grades Pre-K – 12
65 N. Mobile St., Mobile
(251) 479-6551
www.ums-wright.org

Colleges

The Mobile area is home to several four-year institutions and two-year community colleges and career training establishments.

Alabama Aviation Center at Mobile

A unit of Coastal Alabama Community College
1975 Avenue C, Mobile
(251) 438-2816
www.coastalalabama.edu

Alabama Aviation Center at Mobile
Aeroplex at Brookley trains students to work in airframe technology, powerplant technology and avionics. It was the first two-year college to be designated as an official FAA Educational Resource Center.

Bishop State Community College

Main Campus
351 N. Broad St., Mobile
(251) 405-7000
www.bishop.edu

Carver Campus

414 Stanton Rd., Mobile
(251) 662-5362

Southwest Campus

925 Dauphin Island Pkwy., Mobile
(251) 665-4100

Baker–Gaines Central Campus

1365 Dr. Martin Luther King Jr. Ave., Mobile
(251) 405-4400

Bishop State Community College has four campuses and works with local industries to provide training programs for new and existing employees. In addition to university transfer programs, the college is expanding its technology training to match the needs of Mobile industries.

Coastal Alabama Community College

1900 S. U.S. Hwy. 31, Bay Minette
(800) 381-3722
www.coastalalabama.edu

Coastal Alabama Community College, a public two-year institution with 12 campuses in six southwest Alabama counties, offers university transfer courses and an extensive list of career programs.

Faulkner University

3943 Airport Blvd., Mobile
(251) 380-9090
www.faulkner.edu

Faulkner University maintains a campus in Mobile where students can attain associate degrees in most major subjects.

Fortis College

7033 Airport Blvd., Mobile
(251) 344-1203
www.fortis.edu

Fortis College offers a variety of programs in healthcare and air conditioning and refrigeration.

MTI Business Solutions

6300 Grelot Rd., Ste. G123, Mobile
(251) 281-1060
www.mtibusiness.com

MTI Business Solutions provides business training and computer training to individuals as well as to companies of all sizes.

Remington College

828 Downtowner Loop W., Mobile
(251) 243-0639
www.remingtoncollege.edu/mobile

Remington College offers programs including medical technology, computer technology and criminal justice.

Spring Hill College

4000 Dauphin St., Mobile
(251) 380-4000
www.shc.edu

Spring Hill College, founded in 1830, is one of the nation's oldest Jesuit institutions. Recognized as one of the top

liberal arts colleges in the South, it offers graduate programs in business administration, theology, liberal arts, nursing and education, as well as a Division for Lifelong Studies for adults wishing to further their education.

University of South Alabama

307 University Blvd., Mobile
(251) 460-6101
www.southalabama.edu

The University of South Alabama has more than 16,000 students at campuses in Mobile and Baldwin counties. The university offers more than 100 undergraduate, graduate and doctoral degree programs. In healthcare, USA provides students with an exceptional medical education through the colleges of Medicine, Nursing and Allied Health Professions.

University of Mobile

5735 College Parkway, Mobile
(251) 675-5990
www.umobile.edu

The University of Mobile is a private institution affiliated with the Southern Baptist Convention. The university offers on-campus and online bachelor's and master's degree programs in over 40 areas of study.

Virginia College of Mobile

3725 Airport Blvd., Mobile
(251) 343-7227
www.vc.edu

Virginia College offers a wide variety of programs preparing students for careers in business, medical technology, pharmacy, office management, culinary arts and media arts.

MUSEUMS AND ATTRACTIONS



Mobile Museum of Art and Alabama Contemporary Art Center photos

Clockwise from above left: Mobile Carnival Museum, Mobile Museum of Art and Alabama Contemporary Art Center.

Mobile has museums and attractions celebrating almost any local topic: history, art, science, horticulture, marine biology, antebellum architecture and, of course, the revelry of Mardi Gras. These world-class museums not only make Mobile a cultural destination, but also provide educational facilities seldom found in a city its size.

The History Museum of Mobile and Welcome Center

111 S. Royal St., Mobile
(251) 208-7569

www.museumofmobile.com

The History Museum of Mobile, located in a national landmark building, uses interactive exhibits to tell the story of Mobile's more than 300-year history. The museum also serves as the city's official welcome center.

Mobile Carnival Museum
355 Government St., Mobile
(251) 432-3324

www.mobilecarnivalmuseum.com

The William J. and Emily Staples Hearin

Mobile Carnival Museum showcases Mobile as the birthplace of Mardi Gras. The museum allows visitors to experience the excitement of a Mardi Gras parade any time of the year.

Mobile Medical Museum
1664 Springhill Ave., Mobile
(251) 415-1109

www.mobilemedicalmuseum.com

The Mobile Medical Museum uncovers 200 years of medical history.

Alabama Contemporary Art Center
301 Conti St., Mobile
(251) 208-5671

www.alabamacontemporary.com

The Alabama Contemporary Art Center shows modern art in an industrial setting in the center of downtown.

Mobile Museum of Art
4850 Museum Dr., Mobile
(251) 208-5200

www.mobilemuseumofart.com

The Mobile Museum of Art is the setting for a permanent collection of more than 9,000 works of art spanning two centuries,

as well as a changing series of traveling exhibitions and regional art exhibits.

Gulf Coast Exploreum Science Center
65 Government St., Mobile
(251) 208-6881
www.exploreum.com

The Gulf Coast Exploreum Science Center features permanent exhibitions including "My BodyWorks," "Hands on Hall" and "Minds on Hall," as well as major traveling exhibits and movies in the J.L.Bedsole IMAX® Dome Theater.

GulfQuest National Maritime Museum
155 S. Water St., Mobile
(251) 436-8901
www.gulfquest.org

Overlooking the busy Mobile River, the museum offers 90 interactive exhibits, simulators, displays, theaters and a life-sized replica of a container ship to give visitors hands-on experience with maritime industry and history.

MUSEUMS AND ATTRACTIONS



Bellingrath Gardens and Dauphin Island Sea Lab photos

From left: Bellingrath Gardens and Home, Estuarium at the Dauphin Island Sea Lab and The Colonial Fort of Mobile.

Natural Beauty

Bellingrath Gardens and Home
12401 Bellingrath Rd., Theodore
(251) 973-2217
www.bellingrath.org

Bellingrath Gardens and Home, just south of the city, is one of America's most beautiful display gardens and one of the Gulf Coast's most popular attractions.

Mobile Botanical Gardens
5151 Museum Dr., Mobile
(251) 342-0555
www.mobilebotanicalgardens.org

Located near Langan Park, the Mobile Botanical Gardens encompass a 100-acre site of cultivated gardens, woodland trails and a longleaf pine forest.

Estuarium at the Dauphin Island Sea Lab
101 Bienville Blvd., Dauphin Island
(251) 861-2141
www.disl.org

The Estuarium at the Dauphin Island Sea Lab shows visitors the ecological balance of the four key fish and wildlife habitats of coastal Alabama: the Mobile-Tensaw Delta, Mobile Bay, the Barrier Islands and the Gulf of Mexico.

Five Rivers – Alabama's Delta Resource Center
30945 Five Rivers Blvd., Spanish Fort
(251) 625-0814
www.alabama5rivers.com

Just minutes from downtown, the state's 83-acre waterfront complex, 5 Rivers – Alabama's Delta Resource Center, provides public access to the wonders of the Mobile-Tensaw Delta with hundreds of miles of rivers and wetlands.

Historic House Museums

Bragg-Mitchell Mansion
1906 Springhill Ave., Mobile
(251) 471-6364
www.braggmitchellmansion.com

The Bragg-Mitchell Mansion gives a glimpse of lavish plantation life.

Condé-Charlotte Museum House
104 Theatre St., Mobile
(251) 432-4722
www.facebook.com/Conde-Charlotte-Museum-House

The Condé-Charlotte House, built in the 1820s, is one of the city's oldest surviving houses and is furnished to represent five periods of Mobile's history.

Oakleigh Historic Complex
300 Oakleigh Place, Mobile
(251) 432-6161
www.historicoakleigh.org

Built in 1833, Oakleigh, a classic example of Greek Revival architecture, is Mobile's official antebellum mansion.

Other house museums include the **Richards-DAR House**, known for its exceptional iron-lace balconies, and the **Portier House**, home to Mobile's first five Catholic bishops.

Historic Sites

Battleship Memorial Park
2703 Battleship Pkwy., Mobile
(251) 433-2703
www.ussalabama.com

Battleship Memorial Park features the USS ALABAMA, a World War II-era battleship, along with the submarine USS DRUM, an aircraft pavilion of historic planes and several war memorials.

The Colonial Fort of Mobile
111 S. Royal St., Mobile
(251) 802-3092
www.colonialmobile.com

This partial replica of the French colonial fort built in the early 1700s uses costumed re-enactors to recreate Mobile's colonial history under the French, Spanish and English.

Guarding the mouth of Mobile Bay, historic **Fort Gaines** on Dauphin Island and **Fort Morgan** on the opposite shore played major roles in the Civil War.

Tours

Gulf Coast Ducks
2703 Battleship Pkwy., Mobile
(251) 802-8687
www.gulfcoastducks.com

Leaving from Battleship Memorial Park or Fort Condé Welcome Center, Gulf Coast Ducks offers light-hearted but informative tours of the city and its waterfront.

PERFORMING ARTS

Mobile Symphony photo



The Mobile Symphony Orchestra is one of the Gulf Coast's top regional orchestras.

Mobile has one of the Gulf Coast's liveliest performing arts scenes. Locally produced opera, symphony, dance and theater, along with traveling shows, give Mobilians a variety of performance options nearly any week of the year.

Performing Arts Groups

[Mobile Opera](#) presents two major opera productions each year, along with a variety of educational programs.

[Mobile Symphony](#) offers a full season of classical and pops concerts at the Saenger Theatre, student concerts and in-school programs. The symphony has become known as one of the nation's best regional orchestras.

[Mobile Ballet](#) presents three major productions each year, featuring its own company and soloists from some of the world's best dance companies. It also operates a dance academy.

Several local theater groups are active in the community, many with their own theater homes. The [Mobile Theatre Guild](#) has won acclaim at several international competitions. The [Joe Jefferson Players](#) is Alabama's oldest dramatic company.

The [Playhouse in the Park](#) trains Mobile's next theater generation at its theater in Langan Park. Another organization offering opportunities for young performers is [Drama Camp Productions at Sunny Side Theater](#).

The [Mobile Pops](#) and other music groups, including Mobile Piano Ensemble, present concerts at various locations throughout the year.

[Mobile's Singing Children](#) have performed throughout the nation and is a popular outlet for talented youth.

Theaters and Art Centers

The historic [Saenger Theatre](#) attracts a number of the nation's top touring acts. The ornate 1,800-seat theater is also home to the Mobile Symphony.

The [Mobile Civic Center](#) is a multipurpose complex including an arena, theater and exhibit hall. The theater is home to Mobile Opera, Mobile Ballet and traveling productions.

Bernheim Hall, renovated as part of the expansion of the Ben May Main Library of the Mobile Public Library, offers a more intimate setting for performances, lectures and film.

[University of South Alabama Laidlaw Performing Arts Center](#) offers music, theater and dance performances by student, faculty and community groups and is home to [Mobile Chamber Music](#).

The [Mobile Arts Council](#) is a nonprofit organization promoting the development of quality arts programs and cultural growth.

Performing Arts Online

Find out more about events in the Mobile Bay area by visiting www.cityofmobile.org/calendar.

To learn more about the performing arts in the Mobile area, visit these websites:

Joe Jefferson Players
www.joejeffersonplayers.com

Mobile Arts Council
www.mobilearts.org

Mobile Ballet
www.mobileballet.org

Mobile Chamber Music
www.mobilechambermusic.org

Mobile Mystery Dinners
www.mobilemysterydinners.com

Mobile Opera
www.mobileopera.org

Mobile Pops
www.themobilepops.com

Mobile Public Library
www.mobilepubliclibrary.org

Mobile Saenger Theatre
www.mobilesaenger.com

Mobile's Singing Children
www.mobilesingingchildren.org

Mobile Symphony Orchestra
www.mobilesymphony.org

Mobile Theatre Guild
www.mobiletheatreguild.org

Playhouse in the Park
www.playhouseinthepark.org

Sunny Side Theater
www.sunnysidedrama.com

The Steeple
www.thesteeplemobile.com

University of South Alabama Laidlaw Performing Arts Center
www.southalabama.edu

LIBRARIES

MOBILE PUBLIC LIBRARY'S SUMMER READING PROGRAM IS STATE'S LARGEST

Mobile Public Library photo



Left to right: The Mobile Public Library's popular children's reading program and the Ben May Main Library in downtown.

Mobile Public Library

With more than 600,000 items in its collection, the Mobile Public Library serves the citizens of the city of Mobile and Mobile County with 10 locations and a bookmobile. The library not only offers books, but also audio books, CDs, DVDs and e-books.

The Local History and Genealogy Division boasts one of the best regional collections of major city newspapers from 1851 and the *Press-Register* from 1817, as well as impressive sets of maps and census records unmatched on the central Gulf Coast.

The library provides popular events for children and families, and its summer reading program is the largest in the state.

The Mobile Public Library's main branch was named among the 50 most beautiful libraries in America in a state-by-state ranking by *Elle Decor* magazine in 2016.

Find out more about the library and its services at www.mobilepubliclibrary.org.

Ben May Main Library
701 Government St., Mobile
(251) 208-7076
www.mobilepubliclibrary.org

Moorer/Spring Hill Branch
4 McGregor Ave., Mobile
(251) 470-7770

Parkway Branch
1924-B Dauphin Island Pkwy., Mobile
(251) 470-7766

Saraland Public Library
111 Saraland Loop, Saraland
(251) 675-2879

Semmes Branch
9150 Moffett Rd., Semmes
(251) 645-6840

Theodore Oaks Branch
5808 U.S. Hwy. 90 W., Ste. E.
Theodore
(251) 653-5012

Toulminville Branch
601 Stanton Rd., Mobile
(251) 438-7075

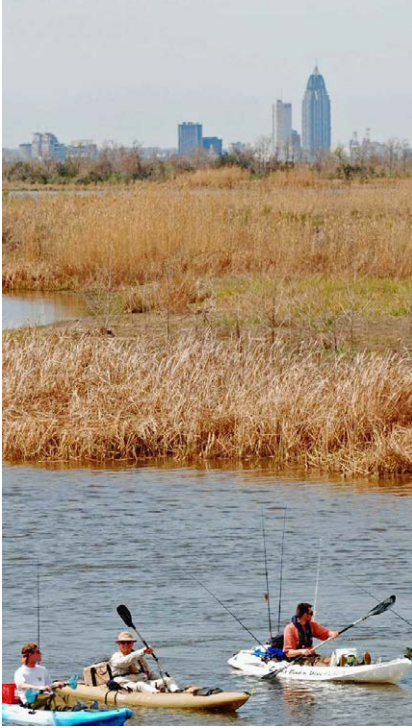
Trinity Gardens Community Library
2668 Berkley Ave., Mobile
(251) 457-5954

West Regional Branch
5555 Grelot Rd., Mobile
(251) 340-8555

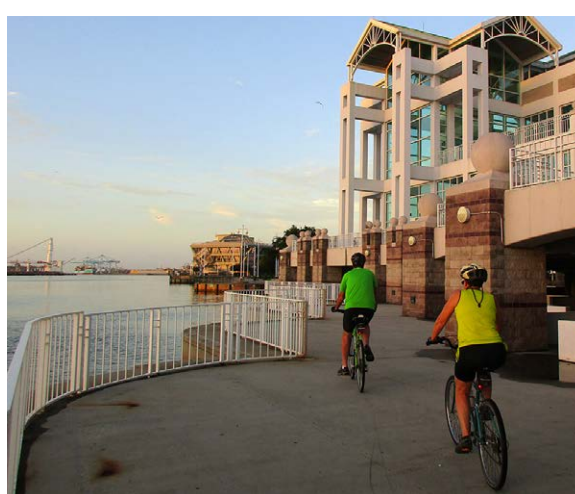
Local History and Genealogy
753 Government St., Mobile
(251) 208-7093

PARKS AND OUTDOORS

Outdoor Alabama photo



Thigpen Photography



Clockwise from above: 5 Rivers – Alabama's Delta Resource Center, Langan Park, Bienville Square and the Mobile River waterfront.

The Mobile area's incredible climate supports year-round outdoor adventures. There are more than 70 parks and playgrounds in the Mobile area offering facilities for picnicing, canoeing, biking, hiking, camping and other leisure activities.

Here are just a few of the options: **Bienville Square** and **Cathedral Square** are popular downtown spaces, while the 720-acre **Langan Park** to the west offers golf, tennis, outdoor concerts, a children's playground and picnic areas. **Arlington Park**, on Mobile Bay near Mobile Aeroplex at Brookley, includes a pier, a kayak launch point and picnic gazebos. **Medal of Honor Park** in west Mobile features a dog park and a pavilion for outdoor concerts. **Chickasabogue Park**, a county park, has bike and foot trails, fishing, camping, canoeing and swimming.

Just minutes from downtown, the state's 83-acre waterfront complex, **5 Rivers – Alabama's Delta Resource Center** provides public access to the wonders of the Mobile-Tensaw Delta with hundreds of miles of rivers and wetlands. Across the U.S. Hwy. 90 Causeway, **Meaher State Park** also serves as a gateway to the delta. Swamp tours are the easiest way to view this unique natural resource, where visitors can learn about birds, fish, alligators, bald eagles, black bears and other wildlife in the area.

The white sands of the **Gulf of Mexico** are a short drive away to Dauphin Island in Mobile County or to the shoreline of Baldwin County.

The **Alabama Coastal Birding Trail** is a birdwatcher's paradise. The trail spans two counties and is enhanced by directional and interpretive signage.

Parks Online

To find out more about parks in the Mobile area, click on one of the links below:

Alabama Coastal Birding Trail
www.alabamacoastalbirdingtrail.com

Alabama State Parks
www.alapark.com
www.outdooralabama.com

City of Mobile
www.cityofmobile.org

5 Rivers – Alabama's Delta Resource Center
www.alabama5rivers.com

Mobile Botanical Gardens
www.mobilebotanicalgardens.org

Mobile County
www.mobilecountyal.gov

SPORTS

GOLF, SAILING, BOATING
FOOTBALL
SOCCER, FISHING, RUNNING
MOBILE
HAS IT ALL!

Mobile BayBears photo



Above: Hank Aaron Stadium celebrates a local legend. **Right:** The Reese's Senior Bowl highlights the best college seniors.



Reese's Senior Bowl photo

Thanks to an abundance of warm, sunny days, golfing, sailing, boating, fishing or just relaxing by the water are options 12 months of the year.

Mobile has more than 25 golf courses in the metropolitan area, ranging from traditional Scottish links to rolling hills with tight fairways. [Alabama's Robert Trent Jones Golf Trail](#) has two courses in the Mobile area, Magnolia Grove and Lakewood Golf Club in Point Clear. The *Wall Street Journal* said the Trail "may be the biggest bargain in the country" and the *New York Times* called the Trail "some of the best public golf on Earth."

[Ladd-Peebles Memorial Stadium](#) is home to the [Reese's Senior Bowl](#), pitting squads of college all-stars against one another, and attracting so many scouts it is sometimes called a mini-convention of NFL coaches. Ladd-Peebles is also home to the [University of South Alabama Jaguars](#) and regular-season high school contests.

The annual [Dollar General Bowl](#) features teams from the Sun Belt and Mid-Atlantic conferences each December, drawing thousands of fans to Mobile.

The [Copeland-Cox Mobile Tennis Center](#), near Langan Park, is the nation's largest public tennis facility, with 60 hard courts.

The [Mobile BayBears](#), the Double-A affiliate of the Los Angeles Angels, play approximately 70 home games at Hank Aaron Stadium each year.

The [University of South Alabama](#), [Spring Hill College](#), the [University of Mobile](#), [Bishop State Community College](#) and [Coastal Alabama Community College](#) field teams in basketball, baseball, soccer and other team and individual sports for both men and women.

Mobile offers both deep sea fishing in the Gulf of Mexico and some of the South's best freshwater fishing in the Mobile-Tensaw Delta. The [Alabama Deep Sea Fishing Rodeo](#) is one of the largest of its kind in the world.

Thousands of runners from around the globe come to Mobile for the [Azalea Trail Run](#), one of the premier 10K races in the country. The [Port City Pacers](#) are responsible for an almost non-stop string of races throughout the year. The annual [First Light Marathon](#) winds through Mobile's historic neighborhoods.

Sports online

To learn more about sports and recreation in the Mobile area, visit these websites:

Alabama Deep Sea Fishing Rodeo
www.adsfr.com

City of Mobile
www.cityofmobile.org

Copeland-Cox Mobile Tennis Center
www.mobiletenniscenter.net

Dollar General Bowl
www.dollargeneralbowl.com

First Light Marathon
www.firstlightmarathon.com

Ladd-Peebles Memorial Stadium
www.laddpeeblesstadium.com

Mobile BayBears
www.mobilebaybears.com

Mobile Sports Authority
www.mobilesportsauthority.com

Mobile Sports Hall of Fame
www.mobilesportshalloffame.com

Port City Pacers
www.pcpacers.org

Reese's Senior Bowl
www.seniorbowl.com

Robert Trent Jones Golf Trail
www.rtgolf.com

ENTERTAINMENT



IN A CITY BORN TO
CELEBRATE
GOOD TIMES ARE
EASY TO FIND

TenSixtyFive, a free music festival, brings thousands downtown to enjoy musical performances ranging from rock to jazz to gospel.

In a city born to celebrate, there's never a shortage of entertainment options. It stands to reason that the city known for bringing Mardi Gras to America would know a thing or two about having a good time.

The list of live music venues is growing throughout the Mobile area, but downtown Mobile serves as the city's entertainment center – with a lively mix of restaurants, nightclubs, bars, galleries and theaters.

Dauphin Street and the historic [Saenger Theatre](#) anchor the district known as LoDa, for Lower Dauphin Street. The renovated Saenger attracts major national touring acts, including Wynton Marsalis, Lyle Lovett, Alabama Shakes, Buddy Guy and Norah Jones, and is home to the [Mobile Symphony](#). Local clubs feature live music every night of the week.

A wide variety of restaurants – from elegant to casual – are popular meeting places for dinner before heading off for an evening of entertainment, music and fun.

Mobile recently joined many other cities in creating designated entertainment districts, allowing people to mingle freely and carry beverages between establishments.

[TenSixtyFive](#) is a free music festival in downtown Mobile attracting thousands of music lovers to hear three days of country, rock, jazz, R&B, rap, gospel and more.

Other festivals such as [LoDa ArtWalk](#) bring crowds of people to downtown streets to sample what the city has to offer.

But nothing tops the excitement of **Mardi Gras** season when crowds fill downtown for three weeks of parades. French soldiers and settlers first celebrated Mardi Gras in Mobile in 1703, and we've been perfecting the party ever since.

Entertainment online

To find more entertainment options in the Mobile area, visit these websites:

Downtown Mobile Alliance
www.downtownmobile.org

Gulf Coast Ethnic and Heritage Jazz Festival
www.gcehjazzfest.com

Mobile Civic Center
www.mobilecivicctr.com

Mobile Arts Council
www.mobilearts.org

Visit Mobile
www.mobile.org

MOJO (Mystic Order of the Jazz Obsessed)
www.mojojazz.org

Saenger Theatre
www.mobilesaenger.com

TenSixtyFive Music Festival
www.tensixtyfive.com

The Grounds
www.thegroundsmobile.com

FOOD



Thigpen Photography

SEAFOOD AND FARM-FRESH PRODUCE SEASON OUR SOUTHERN COOKING!



Food is what brings Mobile's diverse culture together. A strong sense of community is built by bringing folks together for a good time over exceptional food and drinks. There's always a pot of gumbo simmering on a stove somewhere, and a great meal is easy to find.

When visitors to Mobile think of local food, they automatically think of seafood. But locals know our tables are famous for a lot more than some of the world's best shrimp and oysters. Mobile also takes great pride in a rich variety of Southern produce grown by local farmers. Farmers markets, vegetable and fruit stands and curb markets make it easy and affordable to enjoy local produce.

Surrounded by fertile farmland in both Mobile and Baldwin counties and blessed with a long growing season, Mobile enjoys a long list of homegrown treats. Summers are filled with vine-ripe tomatoes, strawberries, watermelons, field peas, cantaloupes, okra, butter beans, peaches, squash and the royalty of local produce – Silver Queen corn. Cooler weather brings turnips, collards, persimmons and citrus crops, such as satsumas and lemons.

Mobile's growing restaurant scene includes classic seafood spots, farm-to-table restaurants and a wide variety of international and ethnic cuisine.

Food Festivals Online

Celebrate Mobile's rich food heritage at these festivals:

Chili Cookoff, benefit for the American Cancer Society
www.mobilechilicookoff.org (March)

Blessing of the Fleet
in Bayou la Batre
www.fleetblessing.org (May)

National Shrimp Festival in Gulf Shores
www.nationalshrimpfestival.com (October)

Greek Fest, three days of food, dancing, music and culture at Annunciation Greek Orthodox Church
www.greekfestmobile.org (October)

Find out about more food events in the Mobile Bay area at www.cityofmobile.org/calendar.

FESTIVALS AND EVENTS

SPRING



Azalea Trail Run: One of the premier 10K road races in the U.S. – (251) 473-7223 or www.pcpacers.org

St. Patrick's Day Parade: Everyone's Irish for this holiday parade in downtown Mobile

Mobile Historic Homes Tour: A rare glimpse inside some of Mobile's most beautiful private homes – (251) 432-6161 or www.historicmobile.org

Dauphin Island Race Regatta: Popular sailing race across Mobile Bay – (251) 928-3276 or www.fairhopeyachtclub.com

Plantasia! Spring Plant Sale: Biannual plant sale offering thousands of plants especially selected for our Gulf Coast climate – (251) 342-0555 or www.mobilebotanicalgardens.org



Mobile BayBears: Baseball season begins in April and runs through September at Hank Aaron Stadium – (251) 479-2327 or www.mobilebaybears.com

Blessing of the Fleet: Decorated boats receive the church's blessing for full fishing nets in Bayou La Batre – www.fleetblessing.org

Mobile Boat Show is the largest boat show on the Gulf Coast, featuring hundreds of boats and marine accessories exhibited inside, outside and in the water – (251) 478-7469 or www.gulfcoastshows.com

Fairhope Arts & Crafts Festival and Eastern Shore Art Association's Annual Outdoor Art Show: A weekend of art, music and food – (251) 928-6387 or www.thefairhopeartsandcraftsfestival.com

Festival of Flowers: One of the nation's top garden shows features landscape displays, seminars, markets and, of course, millions of flowers – (251) 639-2050 or www.festivalofflowers.com

American Cancer Society Chili Cookoff: Hot chili takes the chill off at The Grounds – (251) 344-9858 or www.mobilechilicookoff.org

Brown Bag in Bienville: Free lunchtime concerts in Bienville Square – (251) 208-1550 www.ncsmobile.org

SUMMER

Distinguished Young Women: Finals of this scholarship competition bring the best and brightest high school seniors from all 50 states to Mobile – (251) 438-3621 or www.distinguisheddyw.org

Kids Days: Free entertainment for children in Bienville Square – (251) 208-1550 or www.ncsmobile.org

Market on the Square: Shop for the freshest crop in town – (251) 208-1550 or www.ncsmobile.org



Dragon Boat Festival: Family fun festival and team dragon boat racing to raise money for Fuse Project – (251) 377-3484 or www.fuseproject.org/dragon-boat-festival

Market on the Hill: Farmers Market in Lavretta Park – (251) 208-1550 or www.ncsmobile.org

Summer Reading Program: The state's largest summer reading program, Mobile Public Library – (251) 208-7073 or www.mobilepubliclibrary.org

Mobile's Fourth of July Celebration: Music and fireworks over the river, USS ALABAMA Battleship Park – (251) 470-7749 or www.cityofmobile.org

Grand Bay Watermelon Festival: Entertainment, arts and crafts and the best watermelon around – www.grandbaywatermelonfestival.org

Alabama Deep Sea Fishing Rodeo and Dauphin Island Young Anglers Tournament: Dauphin Island – (251) 471-0025 or www.adsfr.com

Gulf Coast Ethnic and Heritage Jazz Festival: Terrific jazz performances highlight a weekend of art, education, culture and music – (251) 478-4027 or www.gcehjjazzfest.com

Alabama Coastal Cleanup: Mobile and Baldwin County volunteers clean up the coast – www.alabamacoastalcleanup.com

FALL

Veterans Day Parade: One of the Gulf Coast's largest celebrations honoring military veterans. Parade rolls through downtown. Mobile Bay Veterans Commission www.facebook.com/mobilebayveterans



Mobile International Festival: Food, culture and entertainment from around the world – (251) 208-1550 or www.mobileinternationalfestival.org

TenSixtyFive (1065): Free street party celebrating music and local artists – www.tensixtyfive.com

Brown Bag in Bienville: Free lunchtime concerts in Bienville Square – (251) 208-1550 www.ncsmobile.org

The BIG Event: Benefit for Big Brothers Big Sisters South Alabama – (251) 344-0536, ext 107 or www.bbbssa.org

LODA Art Walk: 2nd Friday of every month – (251) 208-1550 or www.ncsmobile.org

Cascading Mums Display and Mum Festival at Bellingsrath Gardens: Lavish display of fall color – (251) 973-2217 or www.bellingsrath.org

Annual Coastal Bird Fest: Weekend full of birding events for the novice or experienced birder – www.alabamacoastalbirdfest.com

FESTIVALS AND EVENTS

Market on the Square: Shop for the freshest crop in town – (251) 208-7540 or www.ncsmobile.org

Plantasia! Fall Plant Sale: Biannual plant sale offering thousands of plants especially selected for our Gulf Coast climate – (251) 342-0555 or www.mobilebotanicalgardens.org



National Shrimp Festival: Four-day celebration of our favorite seafood with music, crafts and more, Gulf Shores – (251) 968-7200 or www.myshrimpfest.com

Polo at the Point: A great event for hat watching, as well as world-class polo, Point Clear – (251) 928-9704 or www.poloatthepoint.com

Greater Gulf State Fair: Rides, food entertainment and displays – (251) 344-4573 or www.thegroundsmobile.com

Greek Fest: Food, dancing, music and culture, Annunciation Greek Orthodox Church – (251) 438-9888 or www.greekfestmobile.org



WINTER

Magic Christmas in Lights: Bellingrath Gardens dressed up for the holidays – (251) 973-2217 or www.bellingrath.org

Christmas Jubilee: Annual Holiday Shopping Market presented by the Junior League of Mobile – (251) 471-3348 or www.juniorleaguemobile.org

Lighting of the Trees in Bienville Square: Santa and the mayor kick off the Mobile holiday season with light displays throughout downtown – (251) 208-1550 or www.ncsmobile.org

MoonPie Over Mobile: New Year's celebration featuring the dropping of a giant MoonPie – (251) 208-1550 or www.ncsmobile.org

Dollar General Bowl: College football bowl game brings thousands to Mobile – (251) 635-0011 or www.dollargeneralbowl.com

First Light Marathon: Mobile's annual marathon benefiting L'Arche Mobile – (251) 438-2094 or www.firstlightmarathon.com

Reese's Senior Bowl: The best senior college football stars and NFL coaches gather in Mobile for what has become the nation's biggest pre-draft event – (251) 438-2276 or www.seniorbowl.com

Dr. Martin Luther King Jr. Celebration: (251) 405-7000 or www.bishop.edu

Mardi Gras: Mobile's original street party includes three weeks of parades and revelry on downtown streets. For a complete schedule of parades, visit www.themobilemask.com

Find out about more events in the Mobile area by visiting www.cityofmobile.org/calendar



SETTING UP A HOME OR BUSINESS IN MOBILE

Driver's License

Alabama Law Enforcement Agency

Driver's License Examiner

3400 Demetropolis Rd., Mobile

(251) 660-2330

www.alea.gov or www.mobilecountylc.com

For out-of-state new residents, first-time issuance of an Alabama driver's license, suspended driver's license, or a foreign national driver's license, you must apply at the Alabama Law Enforcement Agency driver's license office in Mobile County. New residents with a valid out-of-state driver's license have 30 days to obtain an Alabama license. If you currently have a valid out-of-state license, the only requirement is a vision screening test (\$5) and surrender of your out-of-state license. Although a first-time license must be obtained through the state office, driver's licenses can be renewed at any Mobile County License Commission office or [online](#) at the [Alabama Law Enforcement Agency](#).

License Fee: \$36.25, good for four years from date of purchase.

\$5 test fee for first time-drivers

Minimum age: 16

Automobile

Mobile County License Commission

3925 Michael Blvd., Mobile

205 Government St., Mobile

(251) 574-8566

www.mobilecountylc.com

Tags are acquired from the Mobile County License Commission. A new Alabama resident is required to title and register his or her vehicle within 30 days of moving into the state with a valid out-of-state registration. There is a fee plus taxes for all passenger cars. All vehicles (built in 1975 and newer) must have titles. Registration for an out-of-state vehicle must be presented when applying for an Alabama tag. Alabama has a staggered renewal system, and the tag expiration date is according to the first letter of the last name.

The Mobile County License Commission has five convenient locations where you can register a new vehicle, renew your car tag or driver's license, obtain a hunting or fishing license or other license transactions. Tags also can be renewed online, by phone or by mail.

Mobile County License Commission Branches:

Michael Square/Main Office

3925-F Michael Blvd., Mobile

(251) 574-8530

Hours: 7 a.m. to 5 p.m.

Monday, Tuesday, Thursday, Friday

Theodore

5808 U.S. Hwy 90 W., Suite D, Theodore

(251) 574-3286

Hours: 7 a.m. to 5 p.m.

Monday, Tuesday, Thursday, Friday

Eight Mile

Eight Mile Shopping Center

4557 St. Stephens Rd., Eight Mile

(251) 574-3269

Hours: 7 a.m. to 5 p.m.

Monday, Tuesday, Thursday, Friday

Citronelle

19135 S. Main St., Citronelle

(251) 574-2069

Hours: 7 a.m. to 4 p.m.

Tuesday and Thursday

Downtown Mobile

Courthouse Annex

151 Government St., Mobile

(251) 574-4851

Hours: 7 a.m. to 5 p.m.

Monday and Friday

Voter Registration

Mobile County Probate Court

Board of Registrars

205 Government St., Mobile

(251) 574-8586

www.mobilecountyal.gov/government/voting.html

Voter registration forms are available online and at public libraries. Non-registered residents may also fill out voter registration forms at any driver's license office of the Alabama Law Enforcement Agency and cards will be mailed in a few weeks.

Dogs

City of Mobile Animal Shelter

855 Owens St., Mobile

(251) 208-2801

www.cityofmobileanimalshelter.com

All dogs within the city limits are required to be licensed. A license must be purchased during normal office hours, including 9 a.m. to 3 p.m. on Saturday. Proof of current rabies inoculation is required for all license purchases. Inoculation certificates may be obtained from a veterinarian and are good for one year from the date of issue. City dog license tags must be renewed annually.

LICENSES

Business

City of Mobile Revenue Department

205 Government St., Mobile

(251) 208-7462

www.cityofmobile.org/revenue/bus-app.php

City business licenses may be obtained from the license division of the revenue department of the city of Mobile. Rates, based upon a percentage of gross revenues, are published online. Before obtaining a license, zoning for the property of the contemplated business must be cleared with the city of Mobile zoning officer. Other municipalities in Mobile County also require the purchase of a business license.

Mobile County License Commission

3925 Michael Blvd., Mobile

205 Government St., Mobile

(251) 574-8561

www.mobilecountylc.com

State and county business licenses are required in addition to any business licenses of a municipality. State and county business licenses are valid for one fiscal year, Oct. 1 through Sept. 30. Business licenses must be renewed in October to avoid penalties and interest charges. Applications for a business license are available online. Licenses may be purchased by mail or at the Michael Square office or the Downtown Office. Requirements and fees vary based on license code.

Marriage

Mobile County Probate Court

205 Government St., Mobile

(251) 574-6050

www.probate.mobilecountyal.gov/marriage.asp

Minimum age to receive a marriage license is 18. Minors must be accompanied by both parents or legal guardians. There is no waiting period.

Important Numbers to Know

Area Code	251
Emergencies (police, fire, ambulance).....	911
Police (Non-Emergency).....	(251) 208-7211
Automobile Registration	(251) 574-8551
Driver's License	(251) 660-2330
Voter Registration	(251) 574-8586
Hunting, Fishing and Boat Licenses.....	(251) 574-8563
Alabama Power	(800) 245-2244
Mobile Gas.....	(251) 476-8052
Mobile Area Water and Sewer System	(251) 694-3100
AT&T (phone/TV)	
(Residence)	(888) 757-6500
(Commercial).....	(888) 620-6900
(Wireless).....	(888) 333-6651
C Spire	(855) 277-4735
SouthernLINC Wireless.....	(251) 694-2335
T-Mobile	(251) 800-3000
Verizon Wireless Cellular	(251) 304-2138
Xfinity/Comcast Cable	(251) 476-7600
Mediacom.....	(800) 479-2082
City of Mobile	(251) 208-7777
Mobile County.....	(251) 574-4636
Visit Mobile.....	(251) 208-2000
Mobile Welcome Center.....	(251) 208-7304
Mobile Area Chamber of Commerce	
451 Government St.	
Mobile, AL 36602	(251) 433-6951
	(800) 422-6951

TAXES

State Income Tax

(No City/County Wage Taxes)

Tax Rate Range: 2% to 5%

Income Brackets: \$500 to \$3,000

Number of Brackets: 3

Personal Exemption:

Single/\$1,500

Married/\$3,000

Dependents/\$300

Standard Deduction:

Single/\$2,000 to \$2,500

Married filing joint return/\$4,000 to \$7,500

Medical/Dental Deduction:

Limited to excess of 4% of adjusted gross income

Mobile County Sales Tax Rates

City	Total Tax %
Bayou La Batre	10.0
Chickasaw	10.0
Citronelle	9.0
Creola	9.5
Dauphin Island	10.0
Mt. Vernon	9.5
Saraland	10.0
Satsuma	10.0
Semmes	8.5
Mobile	10.0
Prichard	10.0
Unincorporated	5.5

Mobile County Revenue Commission

www.mobilecopropertytax.com

The Revenue Commission is responsible for mapping, appraising, assessing and collecting property taxes in Mobile County. The commission grants tax exemptions to those who qualify and disburses collected taxes to state and county government agencies as directed by law.

Branches:

Michael Square/Main Office

3925 Michael Blvd., Mobile

(251) 574-8530

Hours: 7 a.m. to 5 p.m.

Monday, Tuesday, Thursday, Friday

Theodore

5808 U.S. Hwy. 90 W., Suite G, Theodore

(251) 574-3286

Hours: 7 a.m. to 5 p.m.

Monday, Tuesday, Thursday, Friday

Eight Mile

Eight Mile Shopping Center

4557 St. Stephens Rd., Eight Mile

(251) 574-3269

Hours: 7 a.m. to 5 p.m.

Monday, Tuesday, Thursday, Friday

Citronelle

109 S. Main St., Citronelle

(251) 574-2069

Hours: 9 a.m. to 4 p.m.

Tuesday and Thursday

Downtown Mobile – Courthouse Annex

151 Government St., Mobile

(251) 574-4851

Hours: 7 a.m. to 5 p.m.

Monday and Friday

Property Taxes

Assessment rates are:

10% residential

20% commercial

30% utilities

Rate per \$1,000 assessed valuation (within City of Mobile)

City of Mobile \$7.00

Mobile County \$20.50

State \$6.50

School \$29.50

A homestead exemption may be available to citizens who use their property exclusively as their home. The maximum amount of the exemption is \$4,000 for state taxes and \$2,000 for county taxes. Additional exemptions are available for persons over 65 years of age or disabled.

Taxes on Retirement Income

Social Security, civil service, state/local government and qualified private pensions are exempt. All out-of-state government pensions are tax-exempt if they are defined benefit plans.

Taxes on Military Retirement and Disability Pay –

Retired pay and survivor benefits are not taxed.

VA Dependency and Indemnity Compensation (DIC) –

Not subject to federal or state taxes.

Source: www.retirementliving.com

UTILITIES, PUBLIC SERVICES AND MEDIA

Electric

Alabama Power Co.

150 St. Joseph St., Mobile

(800) 245-2244

www.alabamapower.com

For new service, a credit score will be obtained through a credit reporting agency to determine if a deposit is necessary. If a deposit is needed, the deposit will be refunded as a credit after service has been maintained for 12 consecutive months.

Gas

Mobile Gas

2828 Dauphin St., Mobile

(251) 476-8052

www.mobile-gas.com

All new residential accounts require an \$80 deposit and a \$20 connection fee.

Water and Sewage

Mobile Area Water & Sewer System (City of Mobile)

4725 Moffett Rd., Mobile

(251) 694-3100

www.mawss.com

Residential deposit rate of \$100

Need driver's license and proof of residence

LeMoyné Water System Inc. (North Mobile County)

(municipal-owned)

11426 Old U.S. Hwy. 43, Axis

(251) 675-1797

www.lemoynewater.com

Meter application of \$50 (homeowners)

Need driver's license and proof of ownership/rental agreement

Telephone and Cable

AT&T

(888) 757-6500

www.att.com

Xfinity/Comcast Cable

3248 Springhill Ave., Mobile

476-7600

www.comcast.com

Mediacom

4545 Clearview Dr, Mobile

(251) 666-0849

www.mediacomcable.com

Garbage and Trash

Public Works Department, City of Mobile

(251) 208-2900

Residential garbage collection: once weekly; trash collections once every other week. Residents living outside city limits of Mobile are responsible for obtaining private service.

Recycling

Metro Mobile Recycling Center

1451 Government St., Mobile

(251) 478-3333, www.cityofmobile.org/recycle

Hours: 8 a.m. to 5 p.m. – seven days a week

Mobile County Recycling Center

7450 Hitt Rd., Mobile

(251) 459-8426

www.mobilecountyal.gov

Hours: 8 a.m. to 6:30 p.m. – seven days a week

Media

Mobile is served by seven TV stations (six network affiliates and one public) and 27 radio stations. Mobile has several weekly newspapers and magazines.

Press-Register (3 times a week newspaper) al.com

18 S. Royal St., Mobile

(251) 219-5400

www.al.com

Lagniappe (weekly)

P.O. Box 3003, Mobile

(251) 450-4466

www.lagniappemobile.com

The Call News (weekly)

7870 State St., Citronelle

(251) 866-5998

www.thecallnews.com

WALA TV – Channel 10 (FOX)

1501 Satchel Paige Dr., Mobile

(251) 434-1010

www.fox10tv.com

WEAR TV – Channel 3 (ABC)

4990 Mobile Hwy., Pensacola

(850) 456-3333

www.weartv.com

WKRG TV – Channel 5 (CBS) and CW55

555 Broadcast Dr., Mobile

(251) 479-5555

www.wkrg.com

WPVI TV – Local 15/UTV44 (NBC) and (UPN)

661 Azalea Rd., Mobile

(251) 602-1500

www.local15tv.com or www.utv44.com



YOU WANT A BETTER COMMERCIAL BANKER. REGIONS IS WHERE YOU'LL FIND ONE.

EXPECT BUSINESS INTELLIGENCE THAT GOES BEYOND THE BALANCE SHEET.

There will come a moment when you realize your Regions Commercial Relationship Manager is someone who will bring you a lot more than just ways to raise capital. You'll see we're here to demonstrate our value to you as local, knowledgeable business consultants. You'll find we ask smart questions, listen to your answers and deliver smart solutions for your business. You'll know we're true partners. In that moment, you'll realize you made the right choice.

LET'S START THE CONVERSATION TODAY.

Christian White | Commercial Banking
251.690.1065 | christian.white@regions.com



Commercial Banking | Treasury Management | Capital Markets | Wealth Management